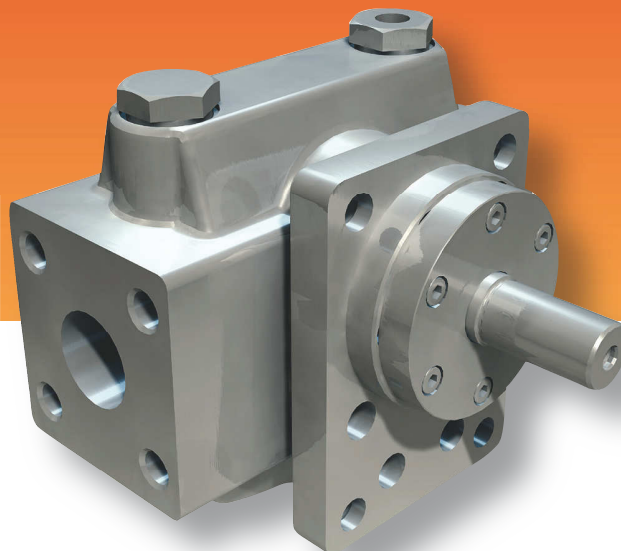
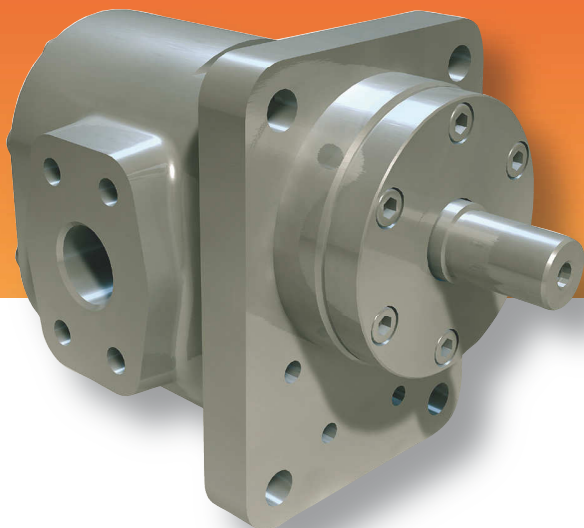


refinex[®] refitherm[®]



A range of typical pumping media:

- Organic and inorganic chemicals
- Solvents
- Emulsions
- Sludges and condensates
- Additives
- Resins
- Cellulose derivatives and pulps
- Polyurethanes (polyol und isocyanate)
- Silicones
- Adhesives and hot-melt adhesives
- Paints and varnishes
- Waxes and paraffins
- Detergents
- Fertilizers
- Mineral oils and fats
- Fuels
- Petrochemical products

Highest durability

Chemical and industrial plant applications are challenging. High process pressures, high temperatures and viscous media are commonplace in such environments. Precisely the environment in which Maag Pump Systems' tried and established gear pumps develop their full potential. refinex[®]/refitherm[®] gear pumps are robust and heatable **cast steel conveying units** that satisfy the stringent quality requirements of today's chemical processing technology.

Thanks to the extensive range of components and materials of constructions to choose from, Maag gear pumps can be configured to suit customers' specific requirements and are therefore far superior to standard pumps in terms of performance and reliability. Whether the applications involve highly pure, corrosive, viscous or very hot media, Maag Pump Systems holds the solution to meet every pumping challenge.

- Wide viscosity range
- Wide temperature range
- Wide pressure range
- High efficiencies due to clearances that are adjusted for the applications
- Reliability
- Longevity
- Safety

Technical specifications:

- Housing:**
- Cast steel
- Gear shafts:**
- Stainless steel
 - Nitrided steel (spur and helical)
 - Nitrided steel coated
- Bearing*:**
- Steel/bronze
 - Sintered iron
 - Synthetic carbon
 - Steel with carbon inserts
 - Nitrided steel
 - Nitrided steel coated
 - Hardened tool steel
 - Bronze – CuAl
- Shaft seal:**
- Lip seals and packing
 - Single or double mechanical seal
 - External mechanical seal
 - Interlock or heater connections available
 - Magnetic coupling with single or double containment shell
- Connections:** SAE, CETOP, DIN and ANSI flanges

* Other materials and designs available
 ** Higher flow rates upon request

Application limits:

- Viscosity:** 0,3 to 4,000,000 mPas
- Temperature:** -30 to 320 °C
- Suction pressure:** Vacuum to 65 bar
- Discharge pressure:** Vacuum to 350 bar
- Flow rate**:** 0.5 to 1,750 l/min

Accessories:

- Stands, motor flanges and base plates
- Product connecting flanges
- Couplings
- Motors and gear reducers
- Frequency converters
- Shaft seal systems

Options:

- Electrical heating
- Heated seals
- Bi-directional rotation
- Special modifications for demanding applications

Certificates:

- ATEX certificate
- 3.1 certificate
- German Air Quality certificate (TA-Luft)
- Performance test certificates

Theoretical pumping capacities:

Model	Pump size	Theoretical pumping capacities in l/min at 0 bar Δp				
		at 500 rpm	at 750 rpm	at 1,000 rpm	at 1,500 rpm	at 3,000 rpm
RX	22/22	2.35	3.53	4.70	7.05	14.10
RX	28/28	5.10	7.65	10.20	15.30	30.60
RX / RT	36/36	12.80	19.20	25.60	38.40	76.80
RX / RT	45/45	23.15	34.73	46.30	69.45	139.00
RX / RT	56/56	46.30	69.45	92.60	138.90	
RX / RT	70/70	88.00	132.00	176.00	264.00	
RX / RT	90/90	186.00	278.00	371.00	557.00	
RX / RT	110/110	358.00	537.00	716.00		
RX / RT	140/140	671.00	1,007.00	1,342.00		
RX	140/180	863.00	1,294.00	1,725.00		

The operating limits are dependant upon the service conditions. Please contact Maag Pump Systems for specific applications.